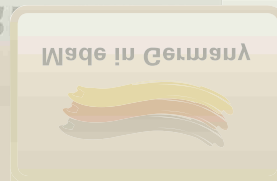
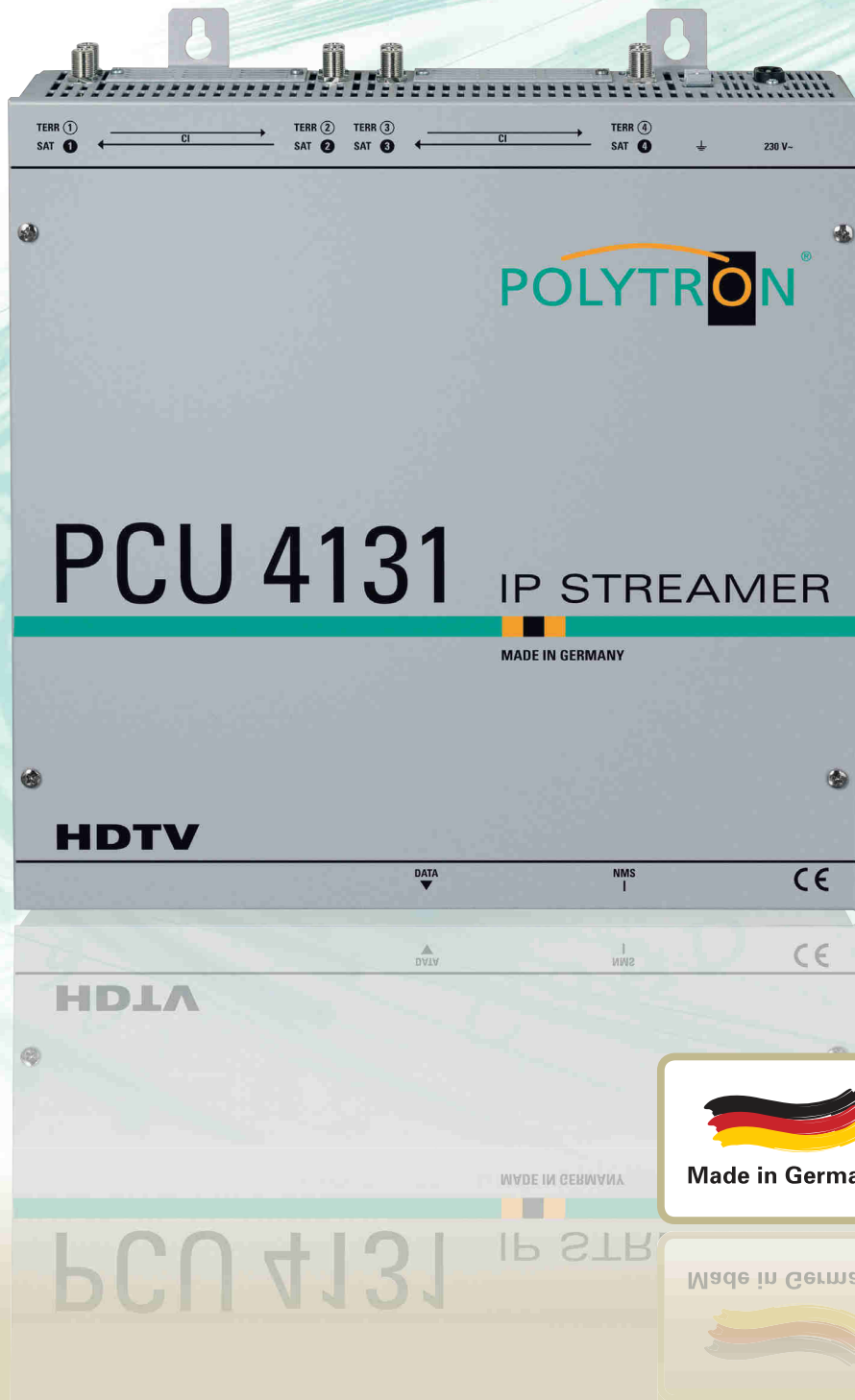




Broadband Systems

IP Streamer



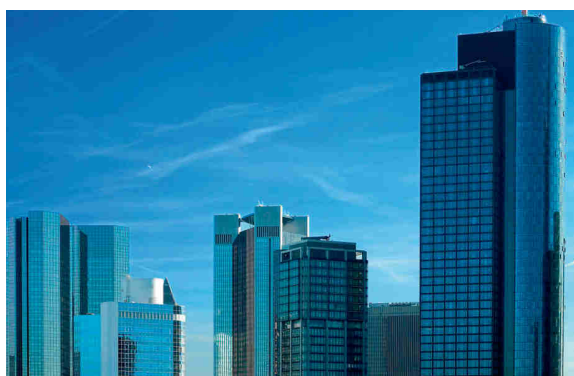
POLYTRON IP streamer

The transmission of TV channels via digital data networks (IPTV) is getting more and more important.

The headend PCU 4131 converts the received DVB signals into IPTV signals which can be distributed in the whole IP network.

Particularly in office buildings and hospitals, providing IP contents via already existing networks is an elegant solution for transmitting TV channels. For new buildings and special applications, such as e.g. cruise ships, the fact that only an IP network needs to be installed and an additional coaxial network can be avoided is a convincing advantage. The constant performance of IP networks also allows a reliable connection of several buildings.

Application examples



Office buildings



Cruise ships



Hospitals

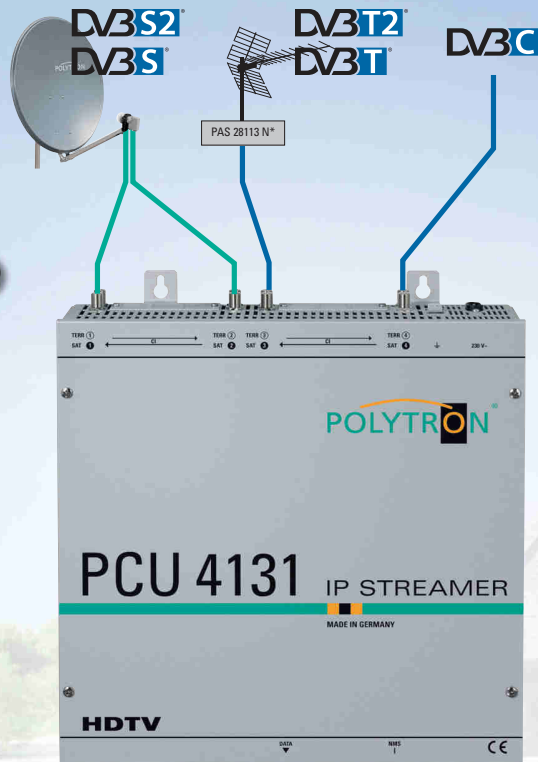


Hotels

Applications IP Streamer for Hotels, Hospitality and Ship Chandlers

Straight Forward Solution

Up to 4 DVB-S/-S2/-T/-T2/-C input signals. Headend allows mixed reception.



IP Streamer

4 MPTS and / or
128 SPTS provisioning
via M3U list



NMS



Switch (querier)



Switch (snooping)



Switch (snooping)

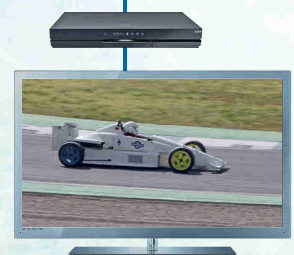
Easy TV solution

- ▶ Manual programming of the channel list for each STB
- ▶ Up to 4x SAT, terr. or CATV inputs with CI into IP Stream
- ▶ 4 MPTS and/or 128 SPTS
- ▶ 1Gbit/s Ethernet streaming connection
- ▶ M3U channel list generator
- ▶ Fast installation into 19" racks
- ▶ Easy programming via web browser
- ▶ Best signal quality due to the use of high quality components.

SMART TV with
M3U support

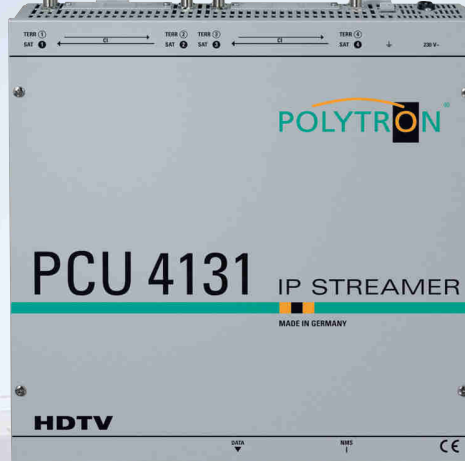
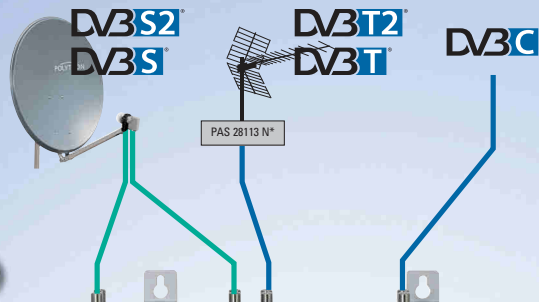


IPTV STB with
M3U support



DeLuxe Solution

Up to 4 DVB-S/-S2/-T/-T2/-C input signals. Headend allows mixed reception.



IP Streamer



NMS



VoD
Middleware



Switch (querier)

**4 MPTS and / or
128 SPTS provisioning
via Middleware**



Switch (snooping)



Switch (snooping)

Comfortable Hotel solution with extra services

(e. g. welcome screen, info TV, billing, internet, ...)

- ▶ Automatical providing of a channel list via middleware
- ▶ Up to 4x SAT, terr. or CATV inputs with CI into IP Stream
- ▶ 4 MPTS and/or 128 SPTS
- ▶ 1 Gbit/s Ethernet streaming connection
- ▶ UDP/RTP unicast, multicast, broadcast
- ▶ Fast installation into 19" racks
- ▶ Easy programming via web browser
- ▶ Best signal quality due to the use of high quality components.

SMART TV
IP compliant

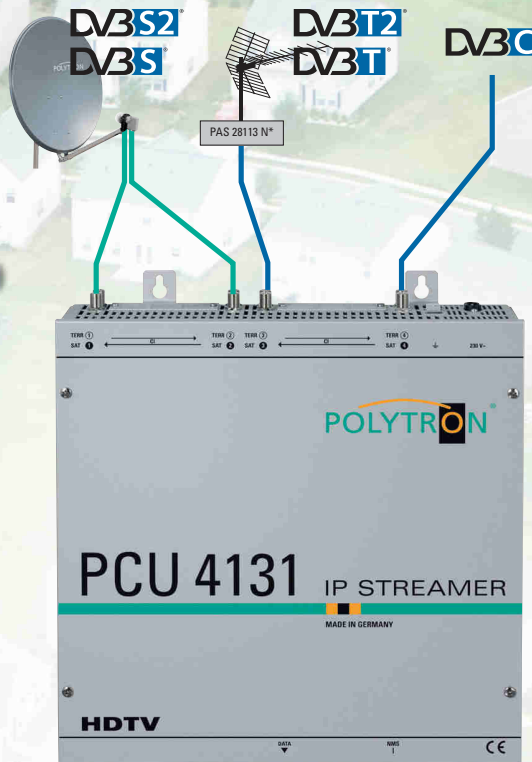


IPTV STB



Streaming Solution

Up to 4 DVB-S/-S2/-T/-T2/-C input signals. Headend allows mixed reception.



Master Headend



NMS

**4 MPTS and / or
128 SPTS provisioning
via Sub-Headend**



Switch



Switch



Switch



**Sub-Headend
IP to PAL / QAM / FM**

Streaming Solution for city carrier, supplier chains, ...

- ▶ Up to 4x SAT, terr. or CATV inputs with CI into IP Stream
- ▶ 4 MPTS and/or 128 SPTS
- ▶ 1 Gbit/s Ethernet streaming connection
- ▶ UDP/RTP unicast, multicast, broadcast
- ▶ Fast installation into 19" racks
- ▶ Easy programming via web browser
- ▶ Best signal quality due to the use of high quality components.



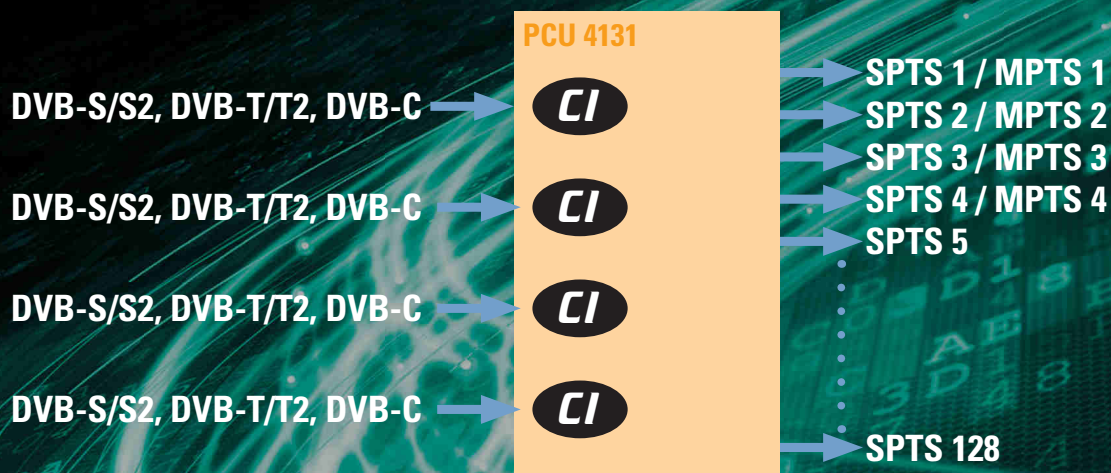
**Sub-Headend
IP to PAL / QAM / FM**

4x DVB-S/S2 / DVB-T/T2 / DVB-C into IP Streamer

The IPTV compact headend PCU 4131 converts DVB-S/S2, DVB-T/T2 and DVB-C signals into IP streams. The integrated CI slots allow the central decryption of the received contents. The signal fed into the IP network is available for all subscribers of the network and can be received directly by PC with appropriate software, IPTV qualified TV sets or set-top boxes supporting the "DVB-IPTV" standard.

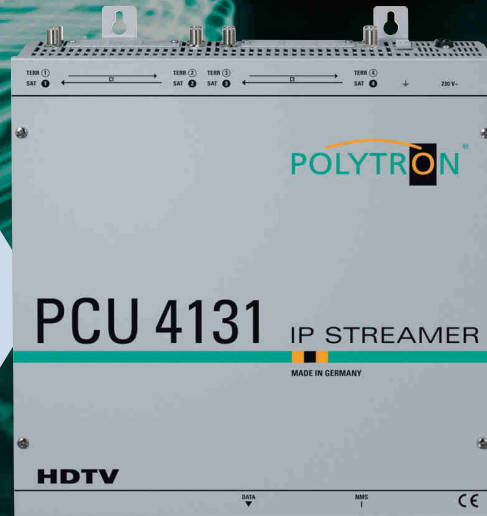
- ▶ Triple tuners: Input signals freely selectable DVB-S/S2, DVB-T/T2, DVB-C
- ▶ Mixed reception
- ▶ 4 CI slots

- ▶ Dynamic PAT and PMT
- ▶ Transponder contents can be erased
- ▶ NIT / SDT adaption
- ▶ Output 4x MPTS or up to 128 SPTS
- ▶ Unicast / Multicast
- ▶ 1 GBit/s ethernet
- ▶ UDP / RTP
- ▶ Programming and updates via web browser
- ▶ M3U channel list generator
- ▶ Built-in LNB-power supply
- ▶ Made in Germany



4x CI HDTV

DVB-S2®
DVB-S®
DVB-T2®
DVB-T®
DVB-C®



4x MPTS or
up to 128x SPTS

Technische Daten / Specifications

Typ / Type	PCU 4131
Artikel-Nr. / Article no.	5552140
Eingänge / Inputs	4
CI-Schnittstellen / CI slots	4
Eingangspegel / Input level	50...80 dBμV
Demodulator	
DVB-S2/S	
SR DVB-S / QPSK	1...45 MS/s
SR DVB-S2 / QPSK	1...45 MS/s
SR DVB-S2 / 8PSK	1...45 MS/s
Modulation	8PSK / QPSK
CR DVB-S / QPSK	1/4, 1/3, 2/5, 1/2, 3/5, 2/3, 3/4, 4/5, 5/6, 8/9, 9/10
CR DVB-S2 / 8PSK	3/5, 2/3, 3/4, 5/6, 8/9, 9/10
Roll off	0.35, 0.25, 0.20
DVB-T	
Modulation	QPSK, 16QAM, 64QAM
FFT	2K, 8K
Bandbreite / Channel bandwidth	7, 8 MHz
Code rate	1/2, 2/3, 3/4, 5/6, 7/8
Guard interval	1/4, 1/8, 1/16, 1/32
DVB-T2	
Modulation	QPSK, 16QAM, 64QAM, 256QAM
FFT	1K, 2K, 4K, 8K, 16K, 32K
Bandbreite / Channel bandwidth	7, 8 MHz
Code rate	1/2, 3/5, 2/3, 3/4, 4/5, 5/6
Guard interval	1/4, 5/32, 1/8, 5/64, 1/16, 1/32, 1/64, 1/128
DVB-C	
Modulation	16QAM, 32QAM, 64QAM, 128QAM, 256QAM
Symbol rate	0.2 ... 7.2 MS/s
Bandbreite / Channel bandwidth	6, 7, 8 MHz
IP-Ausgang / IP Output	
Schnittstelle / Interface	RJ45
Standard	1000-Base-T
Datenrate / Data rate	max. 800 Mbit/s
Protokoll / Protocol	MPEG over UDP/RTP Unicast / Multicast
Format	4 MPTS / max. 128 SPTS
Temperaturbereich / Operating temperature	0...50 °C
Spannungsversorgung / Operating voltage	180...265 V, 50/60 Hz
Maße (B x H x T) / Dimensions (W x H x D)	331 x 328 x 103 mm

Get in touch with us

National orders

+49 (0)7081/170 2-17

International orders

+49 (0)7081/170 2-15

Fax +49 (0)7081/170 2-50

Presales Service

+49 (0)7081/170 2-77

Aftersales Service

+49 (0)7081/170 2-88

POLYTRON ist Mitglied bei / POLYTRON is member of



Always up to date?

Subscribe to POLYTRON's newsletter and receive regular news and information about our products.



Simply scan the code with your smartphone and fill in the registration form. You can unsubscribe at any time.
Target: <https://8158.seu.cleverreach.com/f/8158-5040/>

POLYTRON-Vertrieb GmbH

Postfach / P.O.Box 10 02 33
75313 Bad Wildbad
Germany

www.polytron.de
info@polytron.de

Article no. 9964618, 2018/06
All data without guarantee. Subject to change. Errors excepted.